

# What is EchoLink ?

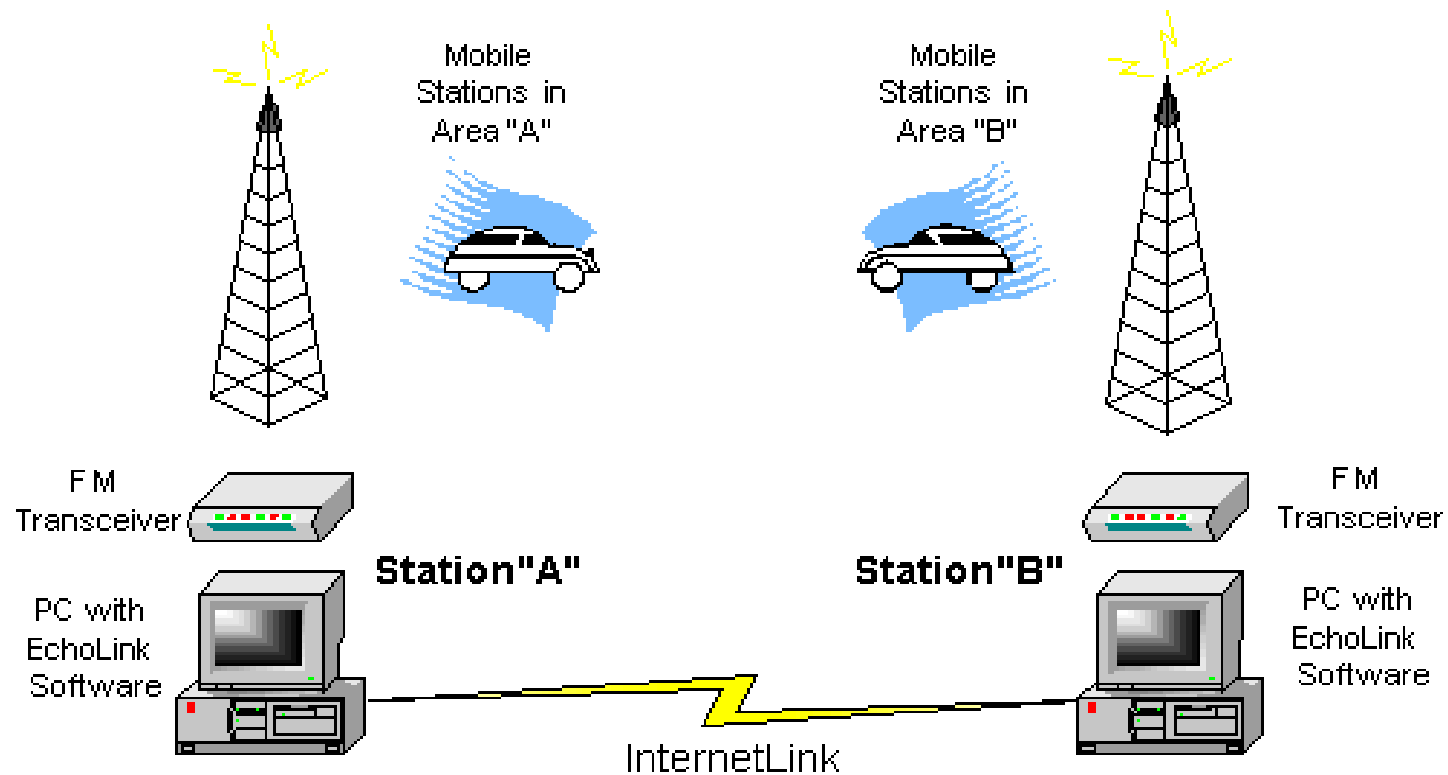
EchoLink® software allows licensed Amateur Radio stations to communicate with one another over the Internet, using streaming-audio technology. The program allows worldwide connections to be made between stations, or from computer to station, greatly enhancing Amateur Radio's communications capabilities. There are more than 200,000 validated users worldwide — in 151 of the world's 193 nations — with about 6,000 online at any given time.

# EchoLink

- Ecolink requires you to have a node number and to be validated as an amateur radio operator.
- Echolink will require a pdf copy of your license from the FCC or they want a small amount of money processing to get your license validated.
- EchoLink is a full-featured software package with many important and useful features. For a brief overview, take a tour !

# EchoLink

## Linking Example



The program runs on Microsoft Windows®. It is offered free of charge and may be downloaded [here](#) .

# EchoLink

The screenshot displays the EchoLink - K1RFD application window. The main interface is divided into several sections:

- Station List:** A tree view on the left shows a list of countries under 'Europe (593)', with 'Germany (133)' selected. A table on the right lists stations with their call signs and locations.
- Station Summary:** A floating window showing overall statistics for repeaters, links, users, and countries.
- Connection Statistics:** A floating window showing details for the current connection to '\*ECHOTEST\* - (confer... ip-68-178-200-46.ip.se...'. It includes a bar chart for 'Send' and 'Net' and a table for 'Received' statistics.
- Status Bar:** At the bottom, it shows 'Connected to: \*ECHOTEST\* (Conference [11]) CONF' and 'ip-68-178-200-46.ip.secureserver.net' with a progress bar. The status is 'Ready' and 'Connected' with an 'RX' indicator.

Station	Location/Description
DB0ANT-R	Wolfenbuttel 439.225MHz
DB0EIN-R	Einbeck JO41VU free
DB0EIS-R	Siegerland - DB0YS+0EIS
DB0EL-R	Munich Olympic Tower
DB0ERG-R	www.db0erg.de.vu
DB0FA-R	Fassberg - 438.600 MHz
DB0FCB-R	St. Arnold, 145.6125MHz
DB0FIG-R	Friedrichshafen
DB0GV-L	Frankfurt/Main Maintal
DB0GWD-R	Greifswald JO64QC
DB0GZ-R	Allfeld 439.350 Mhz
DB0HUS-L	Husum 144.975 (JO44ML)
DB0IGB-R	St. Ingbert / Saarland
DB0IK-R	nr. Arnstadt, Germany
DB0IO-R	DB0IO / Odenwald

	Free	Busy	Total
Repeaters:	1178	65	1243
Links:	1076	369	1445
Users:	436	204	640
Conf Svrs:	189	0	189
Total:	2879	638	3517

*ECHOTEST* - (confer... ip-68-178-200-46.ip.se...	
Sent	Received
Control Packets: 1	Control Packets: 0
Data Packets: 1	Data Packets: 45
Send:	Out of Sequence: 0
Net: [Progress Bar]	Missed: 0
Audio: [Progress Bar]	Compensation: 0

# Tour of EchoLink

- A Tour of EchoLink

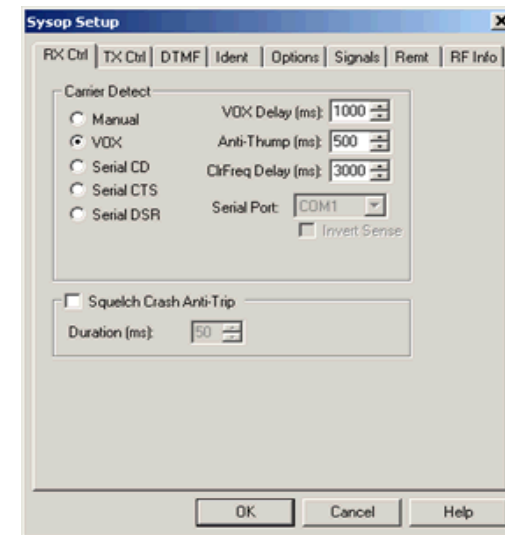
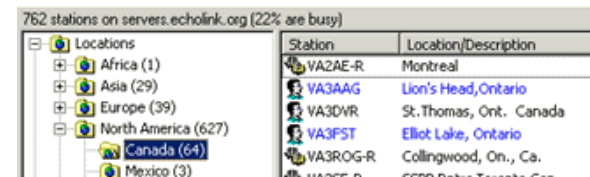
1. For licensed hams, EchoLink<sup>®</sup> software opens up new possibilities for communicating around the world with other amateurs. Your PC links you or your local repeater to any of thousands of other stations over the Internet.
2. There are several different ways you can use the EchoLink software. You can set up a "simplex link" in your shack, with a VHF or UHF transceiver connected to your PC, to allow anyone in range of your station to communicate by voice with any other EchoLink station around the world.
3. Or, you can use the PC's microphone and speakers and remotely connect to any of more than 2,000 different repeaters that have EchoLink capability.
4. The station-list screen keeps running tabs on who's currently on the system. Stations which have recently come on or off are noted separately. Sort the list any way you like. You can set up any number of "alarms" which will sound when your favorite stations come online.

# Tour of EchoLink

5. In Sysop mode, EchoLink connects to a conventional FM transceiver using either the custom-designed linking interface boards from WB2REM and W5TXR, or general-purpose digital-mode interfaces such as the RIGblaster from West Mountain Radio. You can even build your own interface from junk-box parts. The board connects to your computer's sound card and serial port.
6. Virtually any type of Internet connection may be used with EchoLink, from dial-up to DS3. Custom settings allow you to tailor EchoLink to compensate for older computers or slower Internet connections.
7. The program includes a number of important security features, such as the ability to restrict access by country, to help comply with your nation's third-party traffic or reciprocal operating rules.

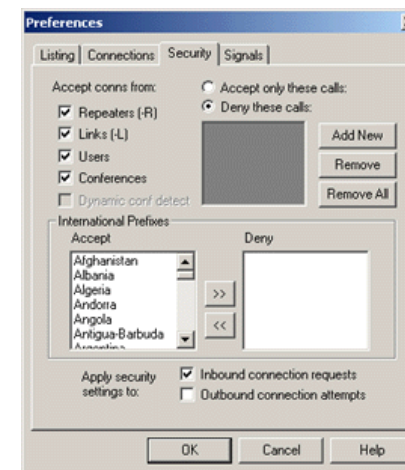
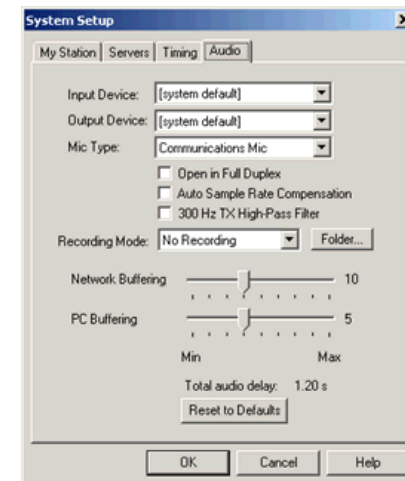
# EchoLink Settings

- The station-list screen keeps running tabs on who's currently on the system. Stations which have recently come on or off are noted separately. Sort the list any way you like. You can set up any number of "alarms" which will sound when your favorite stations come online.
- In Sysop mode, EchoLink connects to a conventional FM transceiver using either the custom-designed linking interface boards from WB2REM and W5TXR, or general-purpose digital-mode interfaces such as the RIGblaster from West Mountain Radio. You can even build your own interface from junk-box parts. The board connects to your computer's sound card and serial port.



# EchoLink Settings

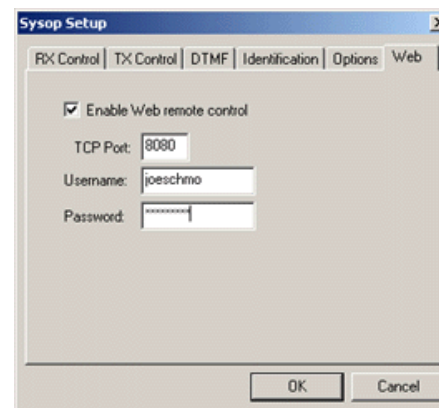
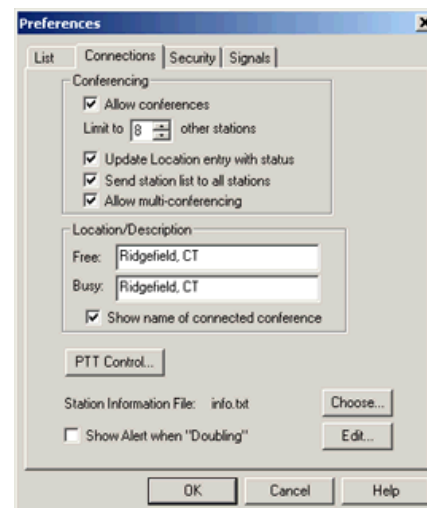
- Virtually any type of Internet connection may be used with EchoLink, from dial-up to DS3. Custom settings allow you to tailor EchoLink to compensate for older computers or slower Internet connections.
- The program includes a number of important security features, such as the ability to restrict access by country, to help comply with your nation's third-party traffic or reciprocal operating rules





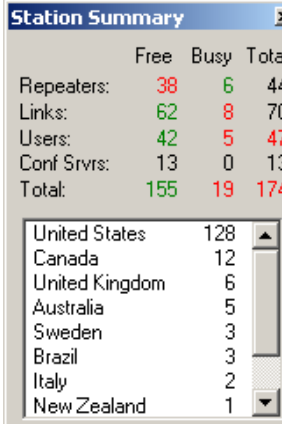
# EchoLink Settings

- A number of useful remote-control features are available in Sysop mode.
- Extended DTMF commands allow stations to be searched or connected by callsign, or the status of any station to be queried. The program also includes a built-in Web server for remote control of EchoLink from any Web browser on the Internet.



# EchoLink Settings

- "Floating" pop-up windows keep track of how many stations are on the system, along with detailed status about the current connection.

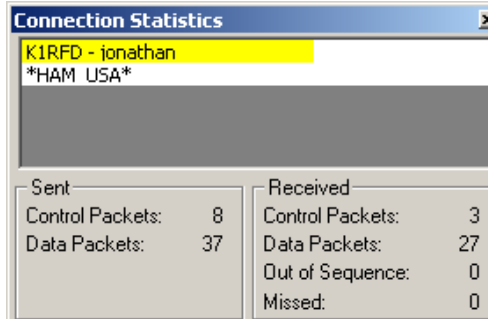


Station Summary

	Free	Busy	Total
Repeaters:	38	6	44
Links:	62	8	70
Users:	42	5	47
Conf Svrs:	13	0	13
Total:	155	19	174

United States	128
Canada	12
United Kingdom	6
Australia	5
Sweden	3
Brazil	3
Italy	2
New Zealand	1



Connection Statistics

K1RFD - jonathan  
\*HAM USA\*

Sent		Received	
Control Packets:	8	Control Packets:	3
Data Packets:	37	Data Packets:	27
		Out of Sequence:	0
		Missed:	0

# EchoLink Info

- EchoLink is a computer-based Amateur Radio system distributed free of charge that allows radio amateurs to communicate with other amateur radio operators using Voice over IP (VoIP) technology on the Internet for at least part of the path between them. It was designed by Jonathan Taylor, a radio amateur with call sign K1RFD.
- The system allows reliable worldwide connections to be made between radio amateurs, greatly enhancing Amateur Radio's communications capabilities. In essence it is the same as other VoIP applications (such as Skype), but with the unique addition of the ability to link to an amateur radio station's transceiver. Thus any low-power handheld amateur radio transceiver which can contact a local EchoLink node (a node is an active EchoLink station with a transceiver attached) can then use the Internet connection of that station to send its transmission via VoIP to any other active EchoLink node, worldwide. No special hardware or software is required to relay a transmission via an EchoLink node.

# EchoLink Info

- Before using the system, it is necessary for a prospective user's callsign to be validated. The EchoLink system requires that each new user provide positive proof of license and identity before his or her callsign is added to the list of validated users. There is no cost for this service, and it ensures that this system is used only by licensed amateur radio operators.
- The software is written to run on 32-bit and 64-bit versions of Microsoft Windows. Another edition of the software runs on Apple mobile devices (iPhone, iPod touch, and iPad), and is available from the Apple App Store. An Android version is available on Google Play and several other Android app repositories.

# EchoLink Info

- Radio amateurs using the EchoLink software can operate it in one of two modes:
- Single User Mode. If they have an Internet-connected computer, they can use the computer's microphone and speakers to connect to (or through - see below) other EchoLink-enabled computers over the Internet and talk to the amateur at the other end.
- Sysop Mode. This entails connecting their own VHF or UHF transceiver to their Internet-connected PC with a simple homemade or manufactured radio-PC digital mode interface. Doing this enables another radio amateur with their own transceiver, who is within radio range of this station, to communicate with (or through) any other EchoLink-equipped station anywhere in the world. This is the unique feature of EchoLink.
- Radio amateurs without the EchoLink software or a computer connected to the Internet can take advantage of the EchoLink network if they are within radio range of a sysop mode EchoLink station. It is also possible to link a sysop mode EchoLink station to a local repeater, further enhancing the communication possibilities.

# EchoLink Info

- Smartphone editions
- Editions of EchoLink are also available for two of the major smartphone platforms. In February 2010, an edition of EchoLink was released for the Apple iPhone, iPad, and iPod Touch on the App Store. In August 2010, an edition of EchoLink was released for the Android platform, and is now available in the Google Play Store. Both the iOS and Android editions were created by Jonathan Taylor (K1RFD), the author of the original Windows edition.

# EchoLink Info

- EchoLink-compatible software for other operating systems[edit]
- Open source software packages that are largely compatible with EchoLink are available for Macintosh (EchoMac and EchoHam) and Linux (echoLinux or SvxLink/Qtel).
- If only the sysop mode is required, the SvxLink Server for Linux is a good alternative. It has features that go beyond the original software and its openness makes it quite easy to extend with new functionality.
- EchoIRLP is a software add on for IRLP which enables an IRLP node to operate as a sysop mode EchoLink station.
- Reflectors are a type of conferencing system. Most reflectors on the network have 10 channels (0–9) with channel 0 being the main channel. Each reflector has a unique 4 digit node number in the range of 9000–9999. The first 3 digits consist of the reflector number, while the fourth digit represents the channel number
- The EchoLink software, which is designed to run on Microsoft Windows, has also been known to work on several Linux builds as well if loaded through Wine.[1]